



GATOR

12V TRAILER JACK

SAVE YOUR BACK





GATOR
12V TRAILER JACK
SAVE YOUR BACK

WARNING:

Read and understand all instructions before using this device

COMPLIES WITH

AS/NZS 5601.2:2020, Gas installations, Part 2: LP Gas installations in caravans and boats for non-propulsive purposes



Introduction

Safety Warning	4
Specifications	5
What's Included	6
Ground Clearance and Extension Height Range Diagrams	7
Installation Instructions	9
Operating Instructions	10
Manual Override	10
Maintenance	10
Troubleshooting	11
Warranty Information	12
Warranty Claim Form	15
Compliance Information	16



INTRODUCTION

Thank you for purchasing the Gator. An Electronic Trailer Jack by Coast RV.

This user manual is designed to provide you with all the necessary information to safely and effectively install and operate your new electronic trailer jack. Please read through this manual thoroughly before using the product to ensure proper installation and operation.

The Gator is designed to assist with raising and lowering trailers with ease, utilising electronic controls for smooth and efficient operation. It is suitable for trailers of various chassis sizes and is equipped with a bracket to suit a multitude of installation scenarios (Refer page 7-8) and its full 360° mounting capabilities allow for near endless mounting possibilities.

Read and understand all instructions before using this device.

Read, understand and follow all of these instructions and warnings before installing and using this product. Install and use this product only as specified in these instructions. Improper installation or use of this product may result in property damage, serious injury, and/or death. Never allow installation or use of this product by anyone without providing them instructions. Follow all instructions and warnings for this product and any items used with it. Keep these instructions for future reference.



GATOR
12V TRAILER JACK
SAVE YOUR BACK

SAFETY WARNING

Failure to follow all warnings and instructions may result in product failure, property damage, serious bodily injury, and/or death.

- This product must be installed and used in strict accordance with these instructions. The purchaser/owner must not alter or modify the product.
- Operator and bystanders should never position any part of body under or on the path of any portion of this product or the load being supported, or moved.
- Do not allow children to play on or around this product or the load being supported, or moved.
- Never exceed the maximum rated capacity. Refer to stamped markings or decals to obtain rated capacity. If uncertain, contact the retailer where you purchased the product.
- Periodically check mounting hardware for proper torque and tighten if necessary.
- Always replace bent, broken, or worn parts before using this product.
- To avoid accidental shock and/or damage to the electrical system, disconnect the battery ground cable before installation.
- Secure the load, vehicle and trailer from rolling (by blocking wheels) when operating jack or coupling trailer.
- These jacks are designed for vertical loading. Excessive side forces may cause jack failure and must be avoided.



SPECIFICATIONS

MAX LOAD	1800 kg
HEIGHT RANGE	REFER DIAGRAMS ON PAGES 7-8
FOOT PLATE	133mm REMOVABLE
HANDLE	MANUAL CRANK OVERRIDE
RATIO	5:1 USING MANUAL CRANK HANDLE
CONSTRUCTION	STEEL AND POLYPROPYLENE
FINISH OUTER	POWDER COATED OUTER TUBE
FINISH INNER	ZINC PLATED
OVERALL DIMENSIONS	781mm (H) x 216mm (W) x 140mm (D)
VOLTAGE RATING	12V DC
CURRENT RATING	28AMPS EXTENDING, 6AMPS RETRACTING
IP RATING	IP 55
APPROVALS	EMC AND RCM
GAS CODE COMPLIANCE	AS/NZS 5601.2.2020

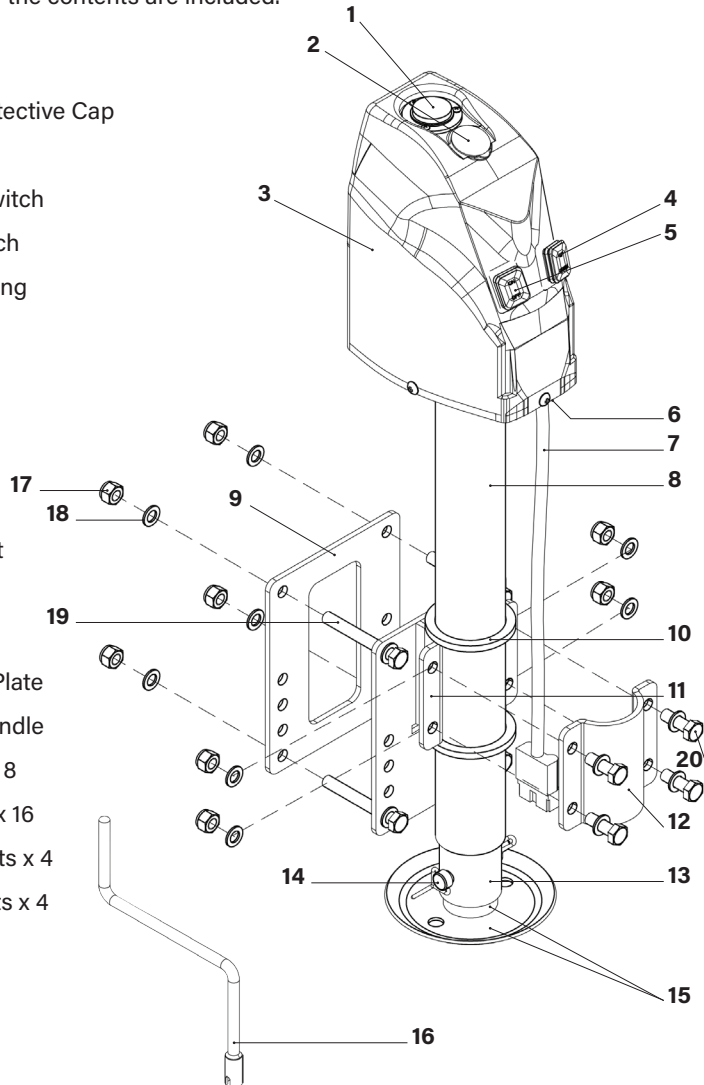


GATOR
12V TRAILER JACK
SAVE YOUR BACK

WHAT'S INCLUDED

WARNING! DO NOT operate the device if any part is missing. Replace the missing part before operating. Failure to do so could result in a malfunction and personal injury. Remove the part and accessories from the packaging and inspect for damage. Check that all items listed in the contents are included.

- 1: Bubble Level
- 2: Manual Crank Protective Cap
- 3: Housing
- 4: Extend/Retract Switch
- 5: L.E.D On/Off Switch
- 6: L.E.D Under Housing
- 7: Harness
- 8: Upper Tube
- 9: Rear Bracket
- 10: Locating Collar
- 11: Main Bracket
- 12: Clamping Bracket
- 13: Inner Leg
- 14: Lock Pin
- 15: Drop Leg / Foot Plate
- 16: Manual Crank Handle
- 17: M10 Nyloc Nuts x 8
- 18: M10 Flat Washer x 16
- 19: M10 x 120mm Bolts x 4
- 20: M10 x 50mm Bolts x 4





GROUND CLEARANCE AND EXTENSION HEIGHT RANGE DIAGRAMS

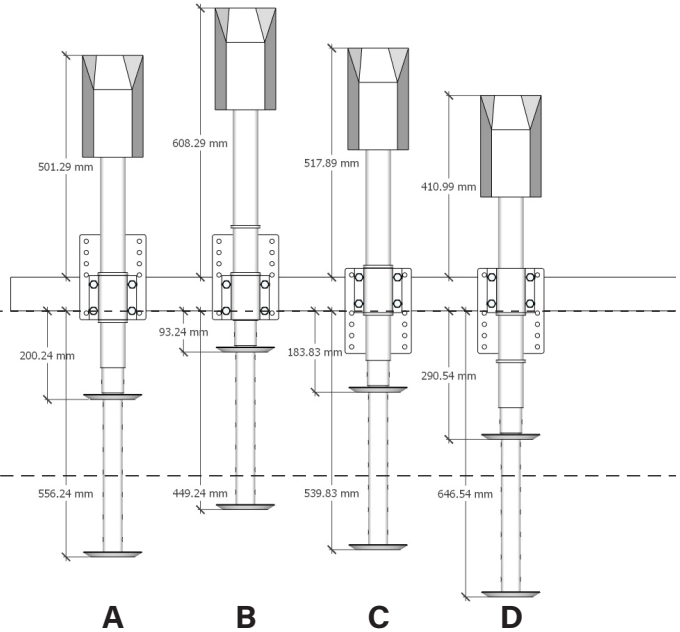
3" chassis

THE POWER LIFT
FEATURE OFFERS
UP TO AN
ADDITIONAL
345MM OF
TELESCOPIC
EXTENSION TO
ANY OF THE
MEASUREMENTS
BELOW THE
CHASSIS LINE

BOTTOM OF CHASSIS
OR CHASSIS LINE

BOTTOM OF CHASSIS
TO BOTTOM OF FOOT
PLATE WITH INNER LEG
SET TO LOWEST HOLE

BOTTOM OF CHASSIS
TO BOTTOM OF FOOT
PLATE WITH INNER LEG
SET TO HIGHEST HOLE



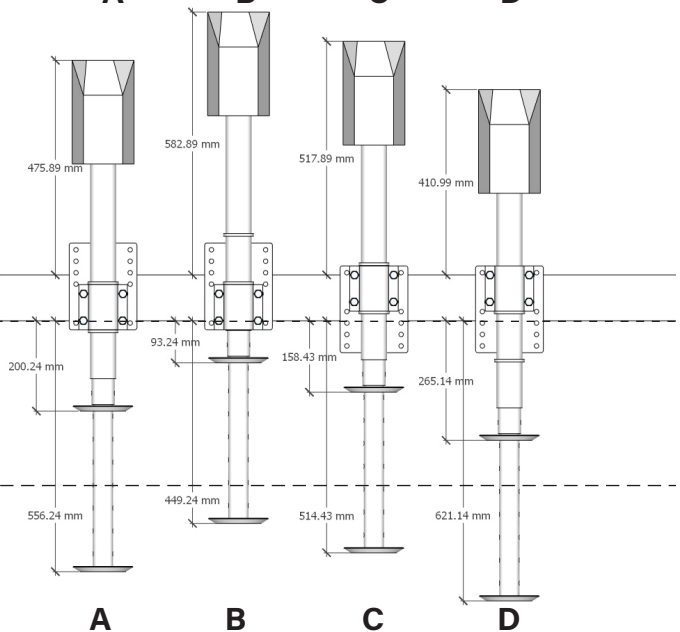
4" chassis

THE POWER LIFT
FEATURE OFFERS
UP TO AN
ADDITIONAL
345MM OF
TELESCOPIC
EXTENSION TO
ANY OF THE
MEASUREMENTS
BELOW THE
CHASSIS LINE

BOTTOM OF CHASSIS
OR CHASSIS LINE

BOTTOM OF CHASSIS
TO BOTTOM OF FOOT
PLATE WITH INNER LEG
SET TO LOWEST HOLE

BOTTOM OF CHASSIS
TO BOTTOM OF FOOT
PLATE WITH INNER LEG
SET TO HIGHEST HOLE





GATOR

12V TRAILER JACK
SAVE YOUR BACK

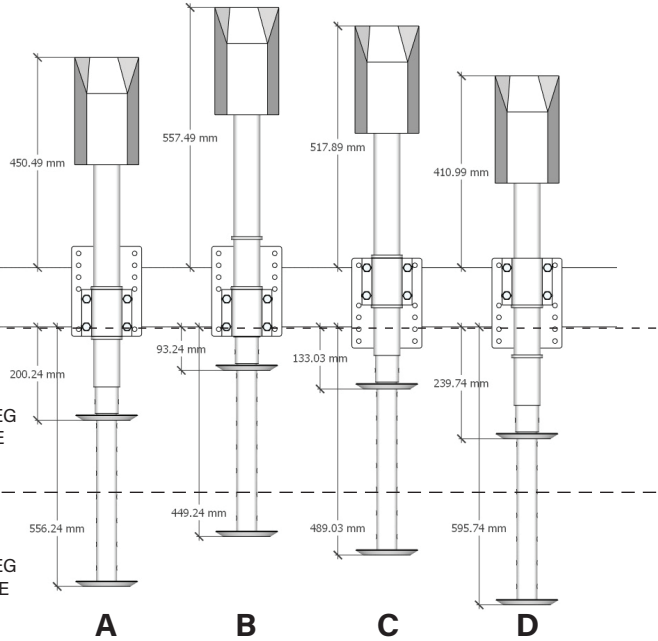
5" chassis

THE POWER LIFT
FEATURE OFFERS
UP TO AN
ADDITIONAL
345MM OF
TELESCOPIC
EXTENSION TO
ANY OF THE
MEASUREMENTS
BELOW THE
CHASSIS LINE

BOTTOM OF CHASSIS
OR CHASSIS LINE

BOTTOM OF CHASSIS
TO BOTTOM OF FOOT
PLATE WITH INNER LEG
SET TO LOWEST HOLE

BOTTOM OF CHASSIS
TO BOTTOM OF FOOT
PLATE WITH INNER LEG
SET TO HIGHEST HOLE



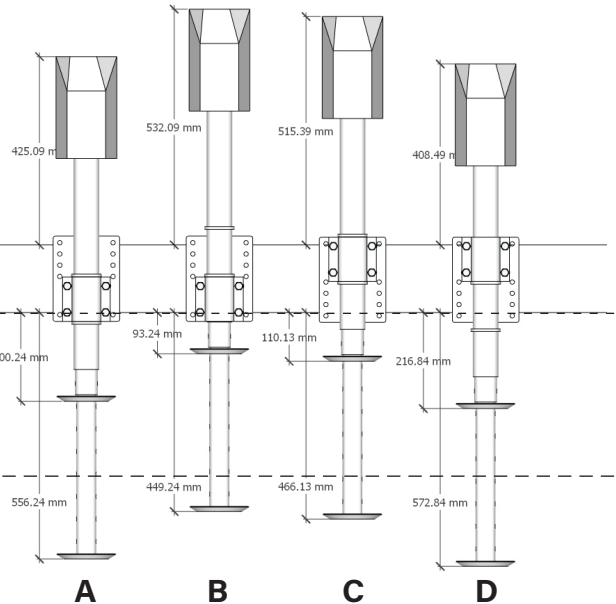
6" chassis

THE POWER LIFT
FEATURE OFFERS
UP TO AN
ADDITIONAL
345MM OF
TELESCOPIC
EXTENSION TO
ANY OF THE
MEASUREMENTS
BELOW THE
CHASSIS LINE

BOTTOM OF CHASSIS
OR CHASSIS LINE

BOTTOM OF CHASSIS
TO BOTTOM OF FOOT
PLATE WITH INNER LEG
SET TO LOWEST HOLE

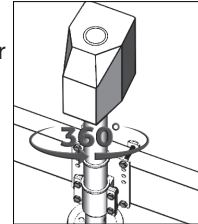
BOTTOM OF CHASSIS
TO BOTTOM OF FOOT
PLATE WITH INNER LEG
SET TO HIGHEST HOLE





INSTALLATION INSTRUCTIONS

1. Attach trailer to tow vehicle. Use vehicle's parking brake and chock wheels of trailer.
2. The Gator Jack has been designed to attach to chassis of 3, 4, 5 and 6" heights.
3. Select your preferred mounting position, the jack can be attached to the A Frame main supports, or any cross member of 3, 4, 5 or 6 inches. The foot plate/drop leg can be installed at any time.
4. Attach the bracket to the chassis using the 4x long bolts, 8 washers and 4x lock nuts. Refer to pages 7-8 for dimensions of different mounting scenarios. Tighten the nuts to secure the main bracket to the chassis member.
5. With the help of another person, hold the jack to the main support bracket in the desired position, take care to ensure the locating collar is positioned in its designated slot when choosing mounting methods A, B, C or D. (see pages 7-8)
6. Attach the outer bracket to the main bracket using the 4x shorter bolts, 8x washers and 4x locking nuts. Do not tighten yet.
7. Clock the jack so that it is in your desired position, the design of our bracket allows for true 360° rotation resulting in ultimate flexibility with regards to the head position. This allows you to avoid contact with other components on the van, whilst allowing the jack to be mounted as close as possible to otherwise potential obstructions. When ready – Fully tighten the nuts/bolts to lock the jack in place.
8. Route the Anderson plug harness from the plastic cover along the trailer to the battery. Attach the harness to the trailer using cable ties or equivalent. Extension harnesses are available for purchase from your Coast to Coast retailer.
9. Connect the Anderson plug harness direct to the battery.
10. Check for proper installation by pressing the motor switch that is marked EXT for extending the jack and RET for retracting the jack. Also check that the light switch turns on the LED light located under the top cover of the jack.
11. After checking for proper operation, be sure to reattach the drop leg to the inner tube of the jack using the lynch pin or plunger pin assembly.
12. Retract the jack completely.
13. Re-check and re-tighten all fasteners after the first trip, bumpy tracks and/or 1000km.
14. Periodically re-check and tighten all hardware. Use of Loctite or marker pen to prevent or highlight loosening of fasteners is encouraged.





GATOR
12V TRAILER JACK
SAVE YOUR BACK

OPERATING INSTRUCTIONS

1. Make sure the battery is fully charged prior to use.
2. Chock trailer wheels.
3. To raise the trailer off the ball, open the coupler and push EXT on switch. This will extend the jack.
4. To lower the trailer on to the ball, push RET on switch. This will retract the jack. After the coupler has fully engaged the ball, continue retracting the jack fully. Be sure to close the coupler. After it has fully retracted, you may need to raise the drop leg also.
5. To function the LED light, use the light switch labeled "ON" and "OFF".
6. If for any reason electric power is lost or unavailable, remove the cap on top of the plastic cover. Insert the manual override crank to raise or lower the jack.

MANUAL OVERRIDE

1. Remove the manual crank protective cap and set aside.
2. Insert and lower the manual crank handle into the hole and turn until it engages
3. Once engaged, turn clockwise to retract the leg (lower the trailer) or counter clockwise to extend the leg (raise the trailer).
1. Refit the manual crank protective cap when complete.

MAINTENANCE

The Gator Jack motor is sealed and maintenance-free. It is important to maintain the electrical system including the battery and charger (not included).

Ensure all connections are tight and free of corrosion. Make sure the battery is fully charged prior to use. Do not direct a high-pressure spray at the Gator Jack.

Periodically re-check and tighten all hardware. Use of Loctite or marker pen to prevent or highlight loosening of fasteners is encouraged.



TROUBLESHOOTING

PROBLEM	POSSIBLE CAUSE	SUGGESTED SOLUTION
MOTOR IS NOT OPERATING	POOR GROUND	ENSURE THE ANDERSON PLUG HARNESS IS CONNECTED FULLY AT BOTH ENDS.
	NO OR LOW VOLTAGE	CHECK THE SUPPLY BATTERY AND ELECTRICAL CONNECTIONS. POWER SUPPLIED MUST BE AT LEAST 10 VOLTS DC. IF THE BATTERY IS LOW, PLUG THE TRAILER CABLE INTO THE TOW VEHICLE AND START THE TOW VEHICLE TO PROVIDE POWER TO THE JACK
	NO POWER FROM THE TRAILER CONNECTOR	CHECK THE TRAILER CONNECTOR HAS POWER. REPLACE OR REPAIR THE TRAILER CONNECTORS OR WIRING.
THE LIGHT IS OK, BUT THE JACK WILL NOT OPERATE	LOOSE WIRES ON ON/OFF SWITCH	SECURE/REPAIR WIRE CONNECTIONS
	ON/OFF SWITCH FAULTY	REPLACE SWITCH
	LOOSE WIRES ON MOTOR	SECURE WIRE CONNECTIONS
	MOTOR FAULTY	REPLACE MOTOR OR REPLACE ENTIRE UNIT WITH A NEW JACK.
JACK CAN OPERATE BUT LIGHT DOESN'T WORK	LOOSE WIRES ON LIGHT SWITCH	CHECK IF THE LIGHT AND/OR SWITCH WIRING CONNECTION IS SECURED
	FAULTY LIGHT AND/OR SWITCH	REPLACE LIGHT AND/OR SWITCH



GATOR
12V TRAILER JACK
SAVE YOUR BACK

CICRV
COAST TO COAST

Coast RV Pty Ltd
trading as Coast to Coast RV Services
ABN 49 097 104 492 - ACN 101 461 330
PO Box 6287, Silverwater NSW 1811
AUSTRALIA
Ph (02) 9645 7600
Email: warranty@coastrv.com.au
Web: www.coastrv.com.au

Coast to Coast RV Services
PO Box 58-054, Botany AUCKLAND 2163
NEW ZEALAND
Ph (09) 274 8700
Email: enquiry@coastrv.co.nz
Web: www.coastrv.co.nz

Warranty Against Defects

1 WHAT THIS WARRANTY RELATES TO

1.1 This warranty covers goods supplied by Coast RV Pty Ltd T/A Coast to Coast RV Services ("Supplier") to the Client ("Goods") and relates to any defects in materials and workmanship under normal use and maintenance ("Defect").

2 WHAT THE SUPPLIER WILL DO TO HONOR THE WARRANTY

2.1 The Supplier will:

- (i) replace or repair the Goods or the defective part of the Goods free of charge;
- (ii) arrange for the Goods or the defective part of the Goods to be repaired or replaced by a qualified repairer free of charge.

2.2 The Supplier reserves the right to replace defective parts of the Goods with parts and components of similar quality, grade or composition where an identical part or component is not available.

2.3 Goods presented for repair may be replaced by refurbished goods of the same type rather than being repaired. Refurbished parts may be used to repair the goods.

3 WHAT THE CLIENT MUST DO TO CLAIM THE WARRANTY

3.1 To claim the benefit of the warranty, the Client will need to (sequentially):

- (i) first contact the Supplier; and
- (ii) present the defective Goods to the Supplier for inspection, including inspection for defective workmanship, or otherwise provide evidence of the claimed Defect, accompanied by evidence of proof of purchase and date of delivery, and if applicable, evidence of maintenance performed in accordance with the relevant maintenance schedules.

3.2 The claim listed in clause 3.1 may be made in person, or the claim may be sent to the address listed on this form, including the particulars required under clauses 3.1(i) and 3.1(ii).

3.3 The appropriate form for making a claim for warranty is as attached.

4 DURATION OF WARRANTY

4.1 This warranty will cease:



(i) where the Goods are purchased already fitted in or as a component of a vehicle or RV: from the date that is twelve (12) months after the Client takes delivery of the vehicle or RV; and

(ii) where the Goods are purchased separately or as an after-market item: from the date that is twelve (12) months from the date of purchase..

4.2 If a Defect does not materialise in the Goods prior to the date provided in clause 4.1, the Supplier will have no liability to the Client under this warranty.

5 RESPONSIBILITY FOR COSTS OF CLAIM UNDER THIS WARRANTY

5.1 The Supplier is responsible for the costs directly associated with repairing or replacing the Goods in accordance with clause 2.1 only.

5.2 Any works required to be completed in addition to fixing the Defect are the responsibility of the Client. Additional works includes any costs associated with any testing or repair of the Goods or any goods to which they are fitted, undertaken by a third party in relation to any defect without prior authorisation from the Supplier.

5.3 Where it is determined that the Goods do not have a Defect, the Client will be charged a GST exclusive inspection fee of forty-five dollars (\$45.00AUD in Australia or \$45.00NZD in New Zealand) plus freight costs for the return of the Goods, this is subject to change without notice.

5.4 The cost of delivery and insurance of the Goods to and from the Supplier, travel costs to and from the Supplier, and the cost of inspecting and testing the Goods are the sole responsibility of the Client.

1 WARRANTY LIMITATIONS

1.1 The Supplier makes no warranties or representations other than those set out in this warranty document except as is required by law.

1.2 The Supplier will not be liable under this warranty:

(i) to the Client or any other person for any consequential, direct or indirect loss, damage or costs incurred or suffered by the Client or any other person, including but not limited to damage to persons, other property, loss of turnover, loss of profits, loss of business or goodwill;

(ii) to the Client for transportation or travel costs which are the Client's responsibility;

(iii) for damage or defects in any Goods caused by improper transportation, storage or any other misuse, neglect or accident.

(iv) for the installation of the Goods. Any fault or defect due to installation should be referred to the installer. The Goods must be installed in accordance with the Manufacturer's instructions and any relevant legislation or code.

1.3 This warranty covers the Client only and it is not transfer able if the Goods are sold by the Client during the warranty period.



2 WARRANTY EXCLUSIONS

2.1 This warranty will not apply where:

- (i) the Goods have been improperly modified or repaired or the Good's defect has arisen due to the Client's failure to properly install, fit, maintain, service or use the Goods in accordance with the specifications and instructions provided by the Manufacturer, including a failure to comply with the relevant maintenance schedule (where applicable);
- (ii) the Supplier cannot establish any Defect in the Goods after testing;
- (iii) the Goods have been used other than for the purpose for which they were designed;
- (iv) the Goods have been subject to abnormal conditions, including but not limited to temperature, pressure, stress, load or similar;
- (v) the Client or installer have used or fitted non-genuine or non-approved parts and accessories to the Goods or have failed to use recommended parts and accessories;
- (vi) the Good's defect has arisen due to abuse, misuse, neglect or accident;
- (vii) the Goods have not been installed in accordance with the relevant instructions;
- (viii) the Good's defect is caused by use or fair wear and tear of the Goods (or expendable parts).

3 RIGHTS AT LAW

3.1 The benefits given to the Client under this warranty are in addition to other rights and remedies of the Client at law in relation to the Goods.

3.2 In Australia our Goods come with guarantees that cannot be excluded under the Australian Consumer Law. You are entitled to a replacement or refund for a major failure and for compensation for any other reasonably foreseeable loss or damage. You are also entitled to have the Goods repaired or replaced if the Goods fail to be of acceptable quality and the failure does not amount to a major failure.



Warranty Claim Form

Warranty Providers Name	Coast RV Pty Ltd trading as Coast to Coast RV Services ABN 49 097 104 492 - ACN 101 461 330
Warranty Providers Address	PO Box 6287, Silverwater NSW 1811 Australia OR; PO Box 58-054 Botany AUCKLAND 2163 New Zealand
Client:	
Contact No.	
Description of Goods provided	
Receipt enclosed: (tick box)	<input type="checkbox"/> YES <input type="checkbox"/> NO
Receipt No:	
Description of defects (Give as much detail as possible. Use a separate page if required)	
Date of purchase/services provided	

I hereby declare that the information provided above is true and correct and to the best of my knowledge and belief and I have complied with all the conditions of the warranty.

Signed:

Name:

(please print)

Dated:

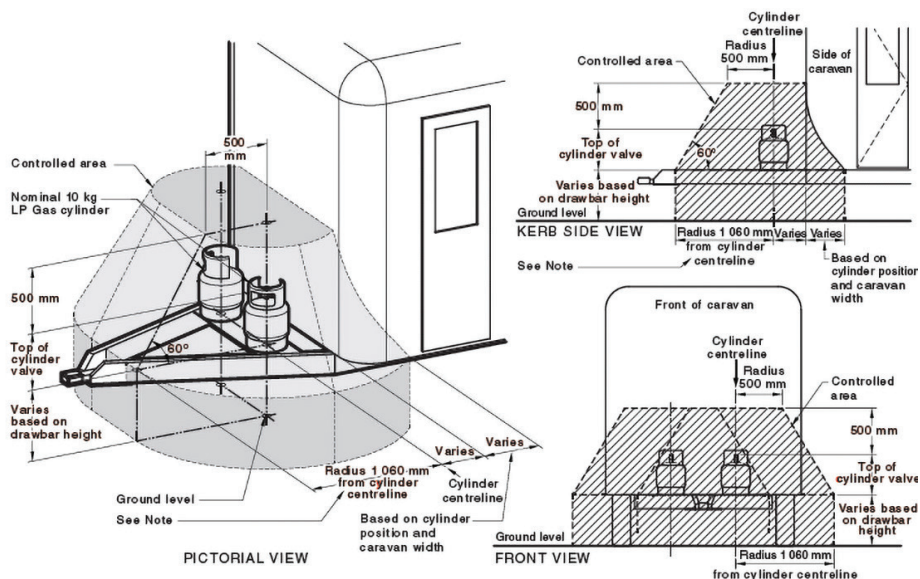
Please note, the issue or completion of this form by the Client does not constitute an admission of liability by the Supplier.



COMPLIANCE INFORMATION

The Gator Jack has been tested, approved and complies with AS/NZS 5601.2.2020 and the requirements thereof.

The most significant change in this revised standard is the introduction of a “controlled area” around gas cylinders and cylinder compartments on domestic caravans (and similar Recreational Vehicles), which is an exclusion area for any ignition sources that could present a risk of explosion in the event of a gas leak.



NOTE: Radius of 1 060 mm (interpolated from 45 kg (0.110 kL) AS/NZS 60079.10.1) is based on a 10 kg cylinder and will vary depending on the height of the cylinder.

The Gator Jack also meets the EMC and RCM requirements for equipment of this nature.